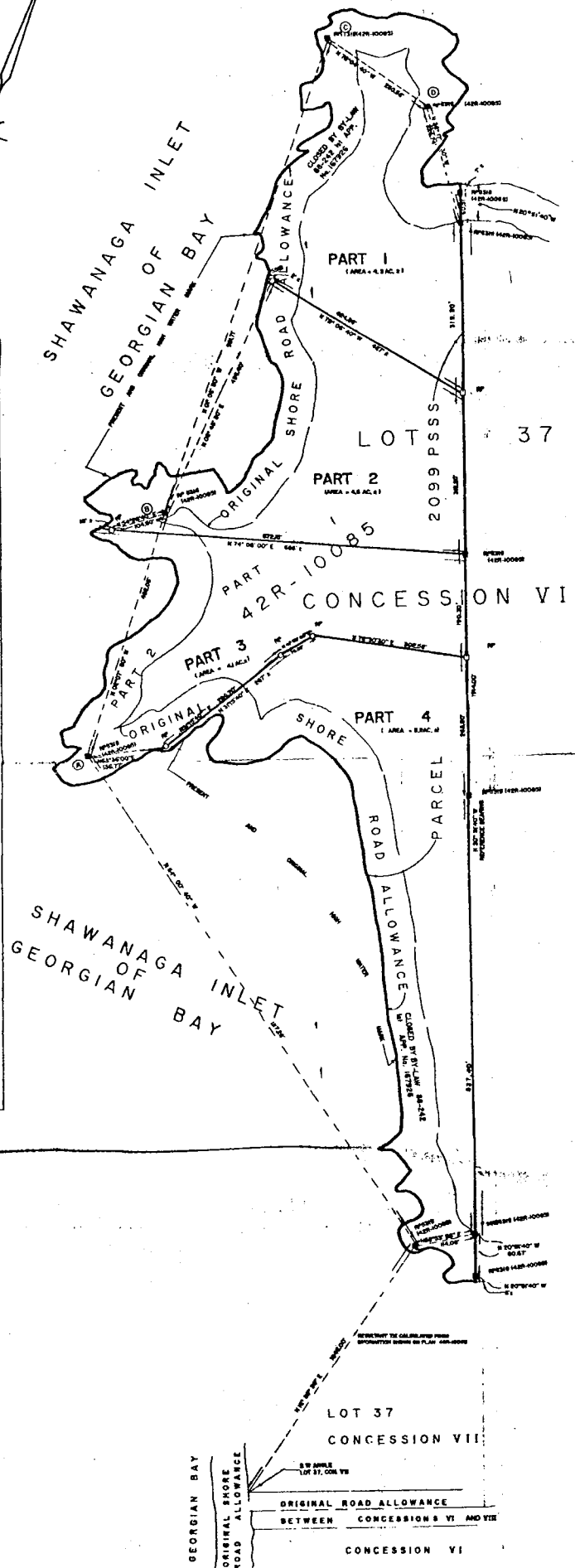


PLAN OF SURVEY OF
 PART OF LOT 37, CONCESSION VII AND THE
 ORIGINAL SHORE ROAD ALLOWANCE IN FRONT THEREOF
 CLOSED BY BY-LAW 88-242, 1st APP. No. 167926
 TOWNSHIP OF SHAWANAGA NOW IN THE
 TOWNSHIP OF THE ARCHIPELAGO
 DISTRICT OF PARRY SOUND
 SCALE 1 INCH = 100 FEET
 PAUL F. FORTH O.L.S. - 1989

| STATION | BEARING | DISTANCE |
|---------|---------|----------|
| 1 | 82°52'W | 200 |
| 2 | 82°54'W | 80 |
| 3 | 82°56'W | 100 |
| 4 | 82°58'W | 120 |
| 5 | 83°00'W | 140 |
| 6 | 83°02'W | 160 |
| 7 | 83°04'W | 180 |
| 8 | 83°06'W | 200 |
| 9 | 83°08'W | 220 |
| 10 | 83°10'W | 240 |
| 11 | 83°12'W | 260 |
| 12 | 83°14'W | 280 |
| 13 | 83°16'W | 300 |
| 14 | 83°18'W | 320 |
| 15 | 83°20'W | 340 |
| 16 | 83°22'W | 360 |
| 17 | 83°24'W | 380 |
| 18 | 83°26'W | 400 |
| 19 | 83°28'W | 420 |
| 20 | 83°30'W | 440 |
| 21 | 83°32'W | 460 |
| 22 | 83°34'W | 480 |
| 23 | 83°36'W | 500 |
| 24 | 83°38'W | 520 |
| 25 | 83°40'W | 540 |
| 26 | 83°42'W | 560 |
| 27 | 83°44'W | 580 |
| 28 | 83°46'W | 600 |
| 29 | 83°48'W | 620 |
| 30 | 83°50'W | 640 |
| 31 | 83°52'W | 660 |
| 32 | 83°54'W | 680 |
| 33 | 83°56'W | 700 |
| 34 | 83°58'W | 720 |
| 35 | 84°00'W | 740 |
| 36 | 84°02'W | 760 |
| 37 | 84°04'W | 780 |
| 38 | 84°06'W | 800 |
| 39 | 84°08'W | 820 |
| 40 | 84°10'W | 840 |
| 41 | 84°12'W | 860 |
| 42 | 84°14'W | 880 |
| 43 | 84°16'W | 900 |
| 44 | 84°18'W | 920 |
| 45 | 84°20'W | 940 |
| 46 | 84°22'W | 960 |
| 47 | 84°24'W | 980 |
| 48 | 84°26'W | 1000 |
| 49 | 84°28'W | 1020 |
| 50 | 84°30'W | 1040 |
| 51 | 84°32'W | 1060 |
| 52 | 84°34'W | 1080 |
| 53 | 84°36'W | 1100 |
| 54 | 84°38'W | 1120 |
| 55 | 84°40'W | 1140 |
| 56 | 84°42'W | 1160 |
| 57 | 84°44'W | 1180 |
| 58 | 84°46'W | 1200 |
| 59 | 84°48'W | 1220 |
| 60 | 84°50'W | 1240 |
| 61 | 84°52'W | 1260 |
| 62 | 84°54'W | 1280 |
| 63 | 84°56'W | 1300 |
| 64 | 84°58'W | 1320 |
| 65 | 85°00'W | 1340 |
| 66 | 85°02'W | 1360 |
| 67 | 85°04'W | 1380 |
| 68 | 85°06'W | 1400 |
| 69 | 85°08'W | 1420 |
| 70 | 85°10'W | 1440 |
| 71 | 85°12'W | 1460 |
| 72 | 85°14'W | 1480 |
| 73 | 85°16'W | 1500 |
| 74 | 85°18'W | 1520 |
| 75 | 85°20'W | 1540 |
| 76 | 85°22'W | 1560 |
| 77 | 85°24'W | 1580 |
| 78 | 85°26'W | 1600 |
| 79 | 85°28'W | 1620 |
| 80 | 85°30'W | 1640 |
| 81 | 85°32'W | 1660 |
| 82 | 85°34'W | 1680 |
| 83 | 85°36'W | 1700 |
| 84 | 85°38'W | 1720 |
| 85 | 85°40'W | 1740 |
| 86 | 85°42'W | 1760 |
| 87 | 85°44'W | 1780 |
| 88 | 85°46'W | 1800 |
| 89 | 85°48'W | 1820 |
| 90 | 85°50'W | 1840 |
| 91 | 85°52'W | 1860 |
| 92 | 85°54'W | 1880 |
| 93 | 85°56'W | 1900 |
| 94 | 85°58'W | 1920 |
| 95 | 86°00'W | 1940 |
| 96 | 86°02'W | 1960 |
| 97 | 86°04'W | 1980 |
| 98 | 86°06'W | 2000 |
| 99 | 86°08'W | 2020 |
| 100 | 86°10'W | 2040 |
| 101 | 86°12'W | 2060 |
| 102 | 86°14'W | 2080 |
| 103 | 86°16'W | 2100 |
| 104 | 86°18'W | 2120 |
| 105 | 86°20'W | 2140 |
| 106 | 86°22'W | 2160 |
| 107 | 86°24'W | 2180 |
| 108 | 86°26'W | 2200 |
| 109 | 86°28'W | 2220 |
| 110 | 86°30'W | 2240 |
| 111 | 86°32'W | 2260 |
| 112 | 86°34'W | 2280 |
| 113 | 86°36'W | 2300 |
| 114 | 86°38'W | 2320 |
| 115 | 86°40'W | 2340 |
| 116 | 86°42'W | 2360 |
| 117 | 86°44'W | 2380 |
| 118 | 86°46'W | 2400 |
| 119 | 86°48'W | 2420 |
| 120 | 86°50'W | 2440 |
| 121 | 86°52'W | 2460 |
| 122 | 86°54'W | 2480 |
| 123 | 86°56'W | 2500 |
| 124 | 86°58'W | 2520 |
| 125 | 87°00'W | 2540 |
| 126 | 87°02'W | 2560 |
| 127 | 87°04'W | 2580 |
| 128 | 87°06'W | 2600 |
| 129 | 87°08'W | 2620 |
| 130 | 87°10'W | 2640 |
| 131 | 87°12'W | 2660 |
| 132 | 87°14'W | 2680 |
| 133 | 87°16'W | 2700 |
| 134 | 87°18'W | 2720 |
| 135 | 87°20'W | 2740 |
| 136 | 87°22'W | 2760 |
| 137 | 87°24'W | 2780 |
| 138 | 87°26'W | 2800 |
| 139 | 87°28'W | 2820 |
| 140 | 87°30'W | 2840 |
| 141 | 87°32'W | 2860 |
| 142 | 87°34'W | 2880 |
| 143 | 87°36'W | 2900 |
| 144 | 87°38'W | 2920 |
| 145 | 87°40'W | 2940 |
| 146 | 87°42'W | 2960 |
| 147 | 87°44'W | 2980 |
| 148 | 87°46'W | 3000 |
| 149 | 87°48'W | 3020 |
| 150 | 87°50'W | 3040 |
| 151 | 87°52'W | 3060 |
| 152 | 87°54'W | 3080 |
| 153 | 87°56'W | 3100 |
| 154 | 87°58'W | 3120 |
| 155 | 88°00'W | 3140 |
| 156 | 88°02'W | 3160 |
| 157 | 88°04'W | 3180 |
| 158 | 88°06'W | 3200 |
| 159 | 88°08'W | 3220 |
| 160 | 88°10'W | 3240 |
| 161 | 88°12'W | 3260 |
| 162 | 88°14'W | 3280 |
| 163 | 88°16'W | 3300 |
| 164 | 88°18'W | 3320 |
| 165 | 88°20'W | 3340 |
| 166 | 88°22'W | 3360 |
| 167 | 88°24'W | 3380 |
| 168 | 88°26'W | 3400 |
| 169 | 88°28'W | 3420 |
| 170 | 88°30'W | 3440 |
| 171 | 88°32'W | 3460 |
| 172 | 88°34'W | 3480 |
| 173 | 88°36'W | 3500 |
| 174 | 88°38'W | 3520 |
| 175 | 88°40'W | 3540 |
| 176 | 88°42'W | 3560 |
| 177 | 88°44'W | 3580 |
| 178 | 88°46'W | 3600 |
| 179 | 88°48'W | 3620 |
| 180 | 88°50'W | 3640 |
| 181 | 88°52'W | 3660 |
| 182 | 88°54'W | 3680 |
| 183 | 88°56'W | 3700 |
| 184 | 88°58'W | 3720 |
| 185 | 89°00'W | 3740 |
| 186 | 89°02'W | 3760 |
| 187 | 89°04'W | 3780 |
| 188 | 89°06'W | 3800 |
| 189 | 89°08'W | 3820 |
| 190 | 89°10'W | 3840 |
| 191 | 89°12'W | 3860 |
| 192 | 89°14'W | 3880 |
| 193 | 89°16'W | 3900 |
| 194 | 89°18'W | 3920 |
| 195 | 89°20'W | 3940 |
| 196 | 89°22'W | 3960 |
| 197 | 89°24'W | 3980 |
| 198 | 89°26'W | 4000 |
| 199 | 89°28'W | 4020 |
| 200 | 89°30'W | 4040 |



CAUTION
 THIS PLAN IS NOT A PLAN OF RESUBDIVISION WITHIN THE MEANING OF THE
 PLANNING ACT.

NOTES
 BEARINGS ARE AZIMUTHIC AND ARE REFERRED TO THE EASTERLY LIMIT OF PART 1.
 PLAN 42R-10085 HAVING A COURSE OF N 20° 34' 40" W.
 THE LIMIT OF THE GEORGIAN BAY AS SHOWN HEREON IS THE
 BEST AVAILABLE EVIDENCE OF THE ORIGINAL HIGH WATER
 MARK OR WATERS EDGE AS IT EXISTED AT THE TIME OF THE
 ORIGINAL SURVEY OF SHAWANAGA TOWNSHIP.

LEGEND
 [Symbol] PLANNED SURVEY MONUMENT
 [Symbol] PLANTED SURVEY MONUMENT
 [Symbol] SHORT STANDARD IRON BAR
 [Symbol] STANDARD IRON BAR
 [Symbol] ROCK POST
 [Symbol] P.F. FORTH, O.L.S.

SURVEYOR'S CERTIFICATE
 I CERTIFY THAT:
 1. THIS SURVEY AND PLAN ARE CORRECT AND MADE IN
 ACCORDANCE WITH THE SURVEY ACT, THE LAND TITLES ACT
 AND THE REGULATIONS MADE THEREUNDER.
 2. THE SURVEY WAS COMPLETED ON SEPTEMBER 17, 1989.

OCTOBER 5, 1989
 PARRY SOUND, ONTARIO
 Paul F. FORTH
 ONTARIO LAND SURVEYOR